

✓ XC:PC 1/12/05



Connecticut Fund for the Environment

FILE COPY
Exhibit #142

January 4, 2005

Old Saybrook Planning Commission
Town of Old Saybrook
302 Main Street
Old Saybrook, CT 06475

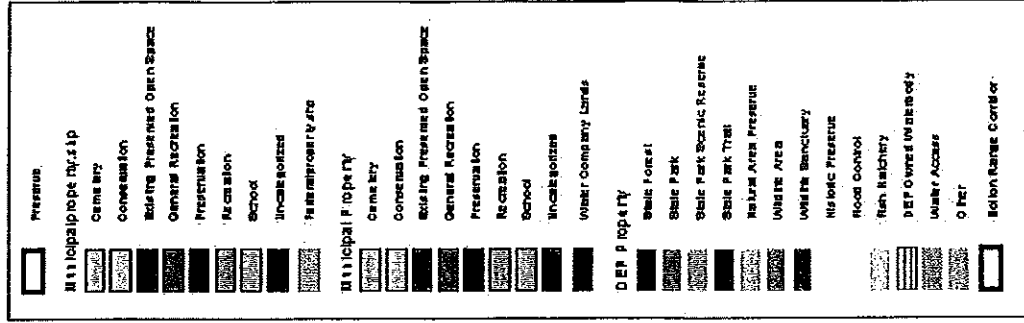
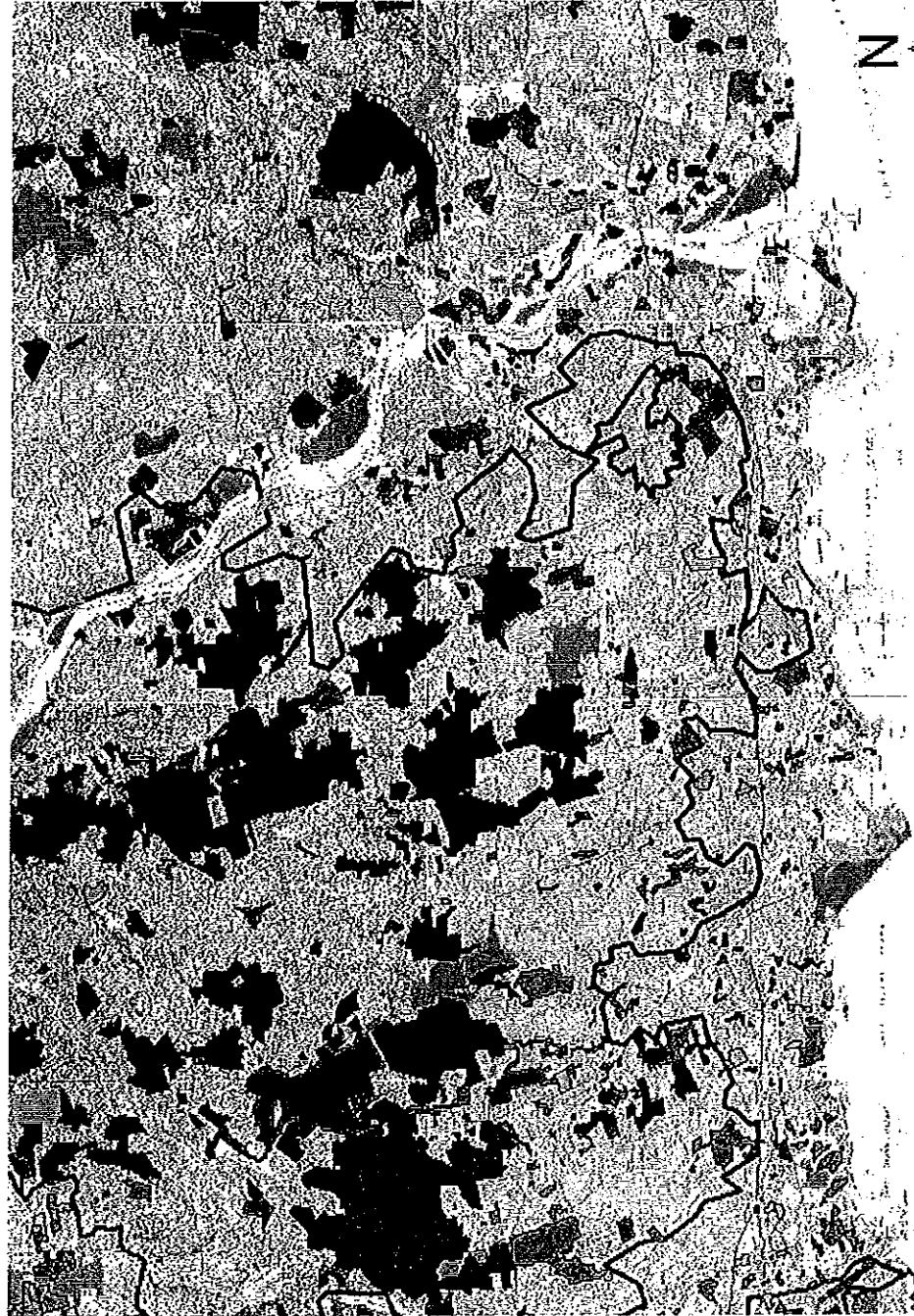
**Re: River Sound Development, LLC
Special Exception Application**

“The Preserve” Forest Block and surrounding Landscape

Dear Chairman McIntyre and Commission Members:

Per your request, attached is a map showing the Preserve property and the open space in the surrounding region. This map was prepared by Patrick Comins, Director of Bird Conversation for Audubon Connecticut.

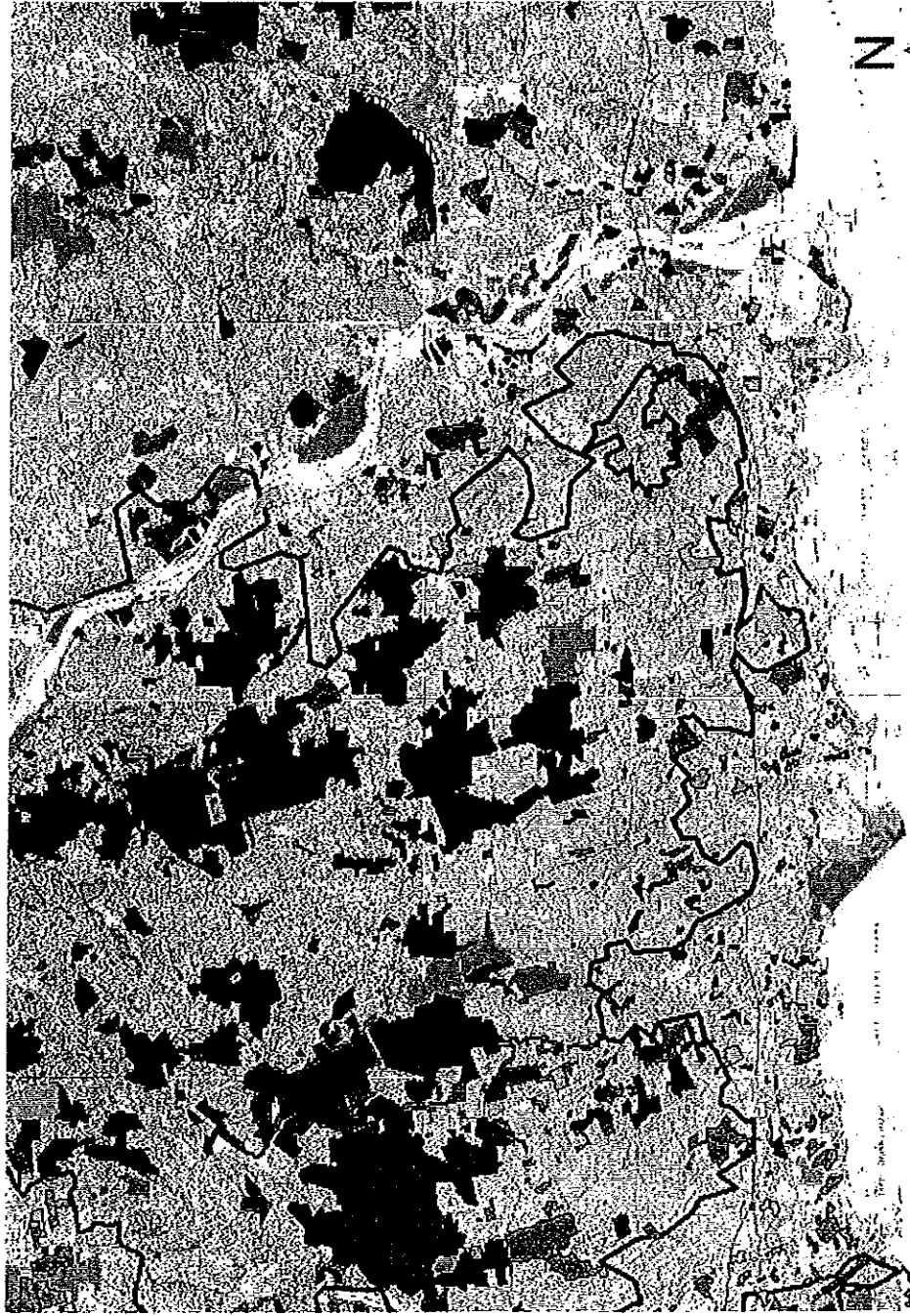
Property and Protected Open Space Within Region



Audubon CONNECTICUT



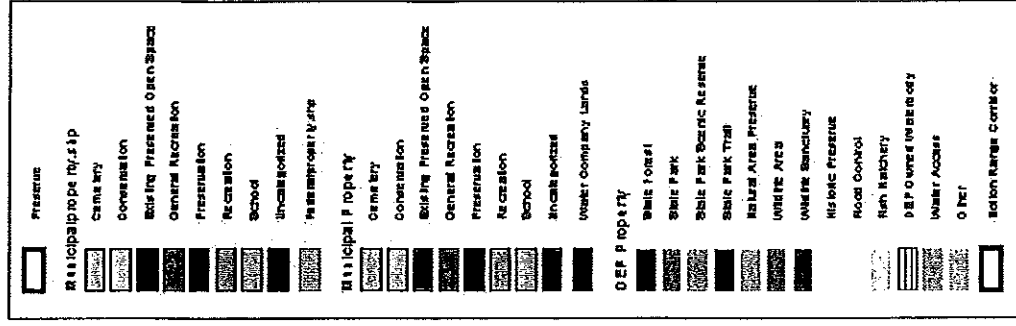
Property and Protected Open Space Within Region



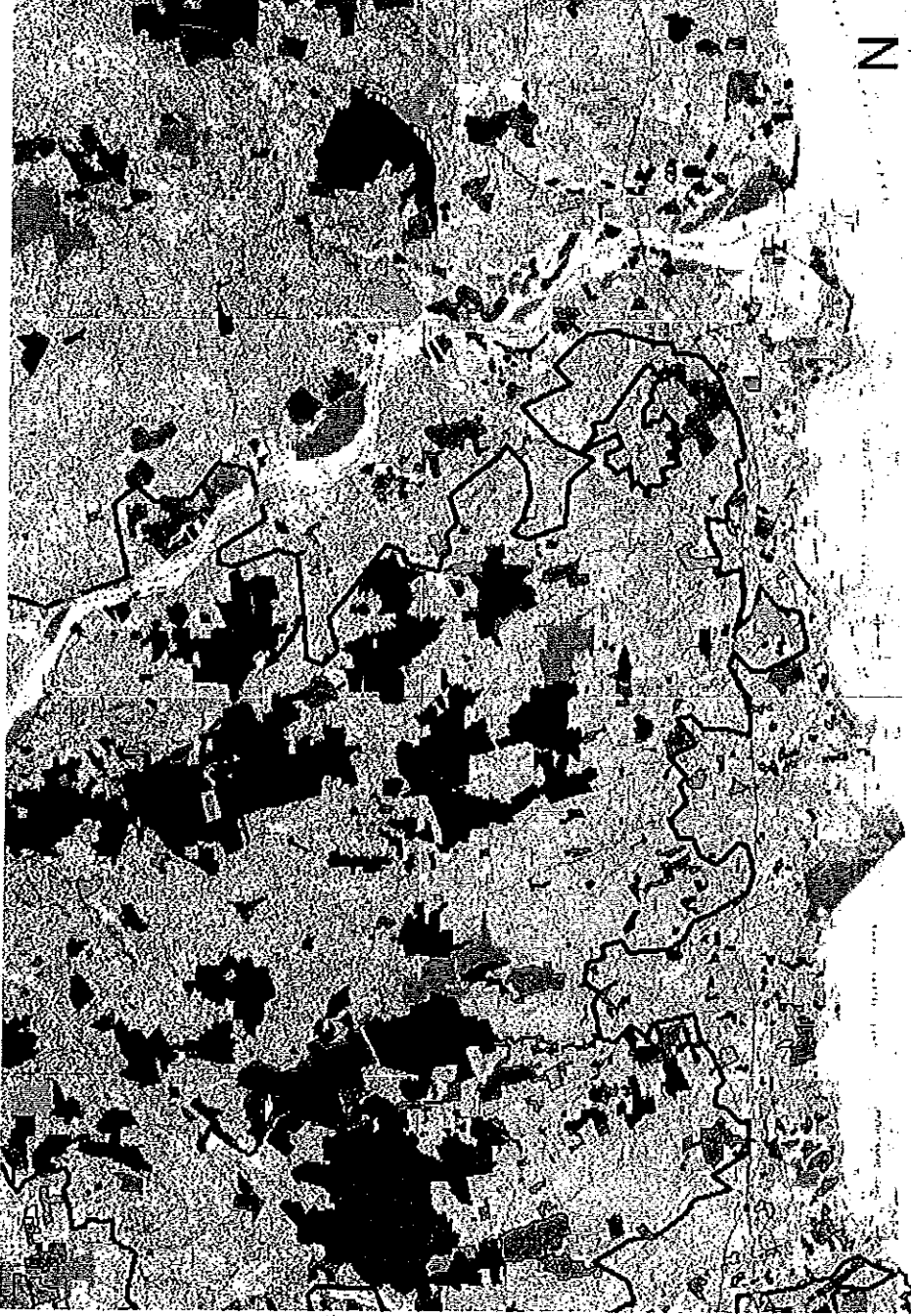
Audubon CONNECTICUT

8 0 8

16 Miles



Property and Protected Open Space Within Region

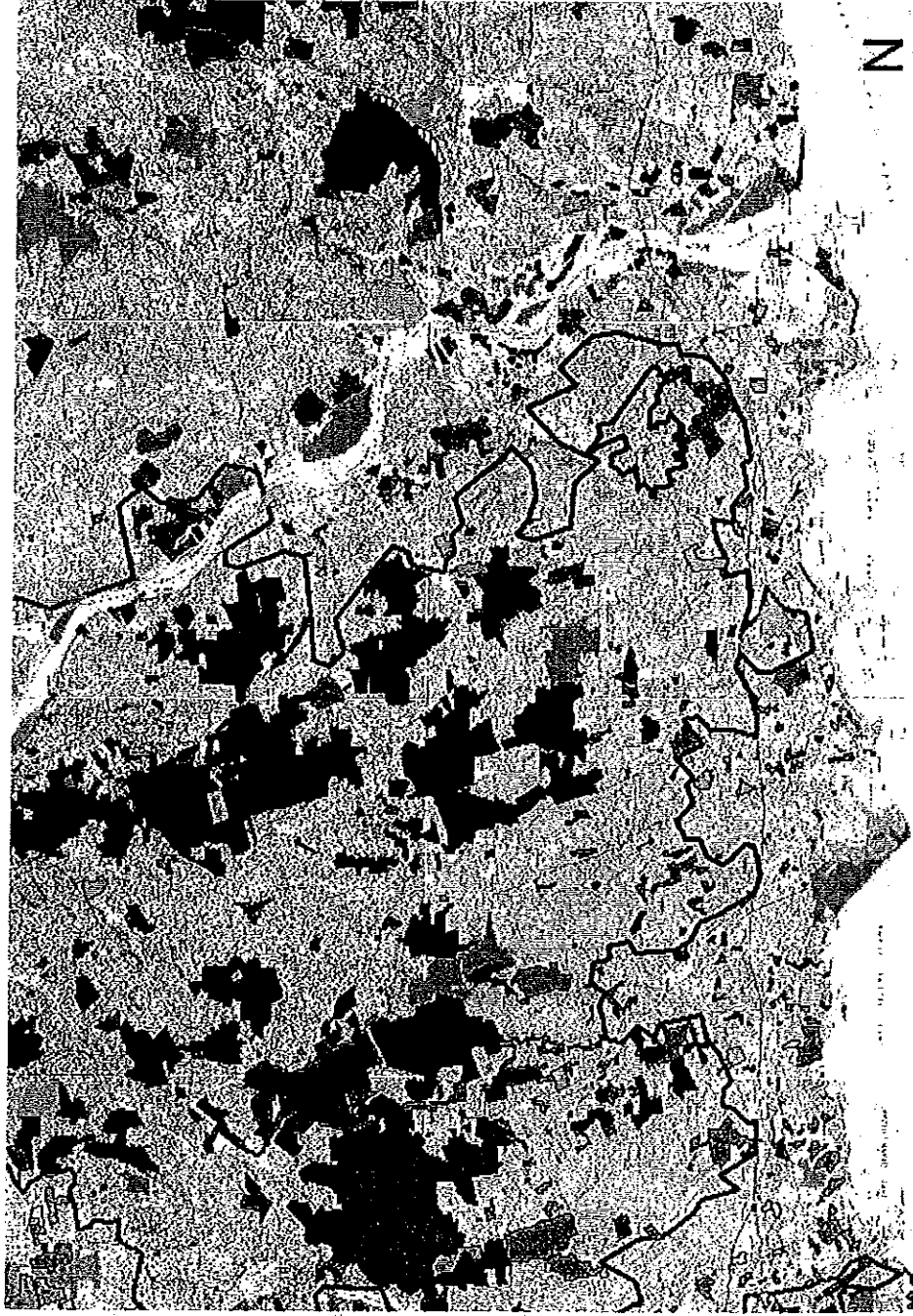


Audubon CONNECTICUT



	Preserve
	State Property
	State Forest
	State Park
	State Park Scenic Reserve
	State Park Trail
	Katymir Area Preserve
	Wildlife Area
	Wildlife Sanctuary
	Historic Preserve
	Flood Control
	Fish Hatchery
	DEP Owned Watershed
	Water Access
	OTFC
	Notion Range Corridor
	Private
	Cemetary
	Conservation
	Existing Preserved Open Space
	General Recreation
	Preservation
	Recreation
	School
	Trails
	Water Company Lands
	State Property
	State Forest
	State Park
	State Park Scenic Reserve
	State Park Trail
	Katymir Area Preserve
	Wildlife Area
	Wildlife Sanctuary
	Historic Preserve
	Flood Control
	Fish Hatchery
	DEP Owned Watershed
	Water Access
	OTFC
	Notion Range Corridor
	Private
	Cemetary
	Conservation
	Existing Preserved Open Space
	General Recreation
	Preservation
	Recreation
	School
	Trails
	Water Company Lands

Property and Protected Open Space Within Region

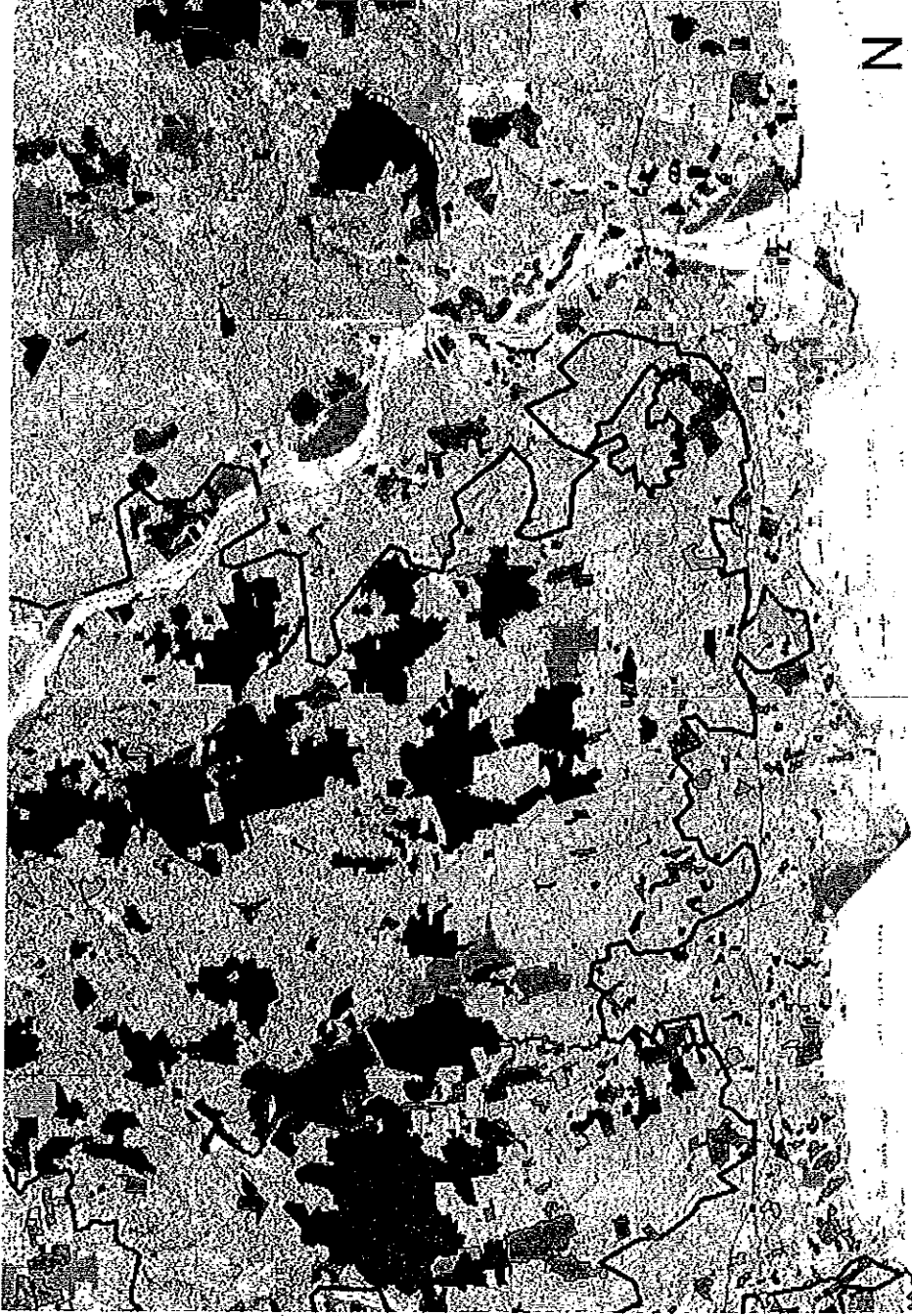


	Preserve
	Municipal Property
	Cemetery
	Conservation
	Existing Protected Open Space
	General Recreation
	Preservation
	Recreation
	School
	Unincorporated
	Water Company Land
	Municipal Property
	Cemetery
	Conservation
	Existing Protected Open Space
	General Recreation
	Preservation
	Recreation
	School
	Unincorporated
	Water Company Land
	DEP Property
	State Forest
	State Park
	State Park Scientific Reserve
	State Park Trail
	Natural Area Preserve
	Wildlife Area
	Wildlife Sanctuary
	Historic Preserve
	Flood Control
	Fish Hatchery
	DEP Owned Wetlands
	Water Access
	Other
	Section Range Corridor

Audubon CONNECTICUT



Property and Protected Open Space Within Region



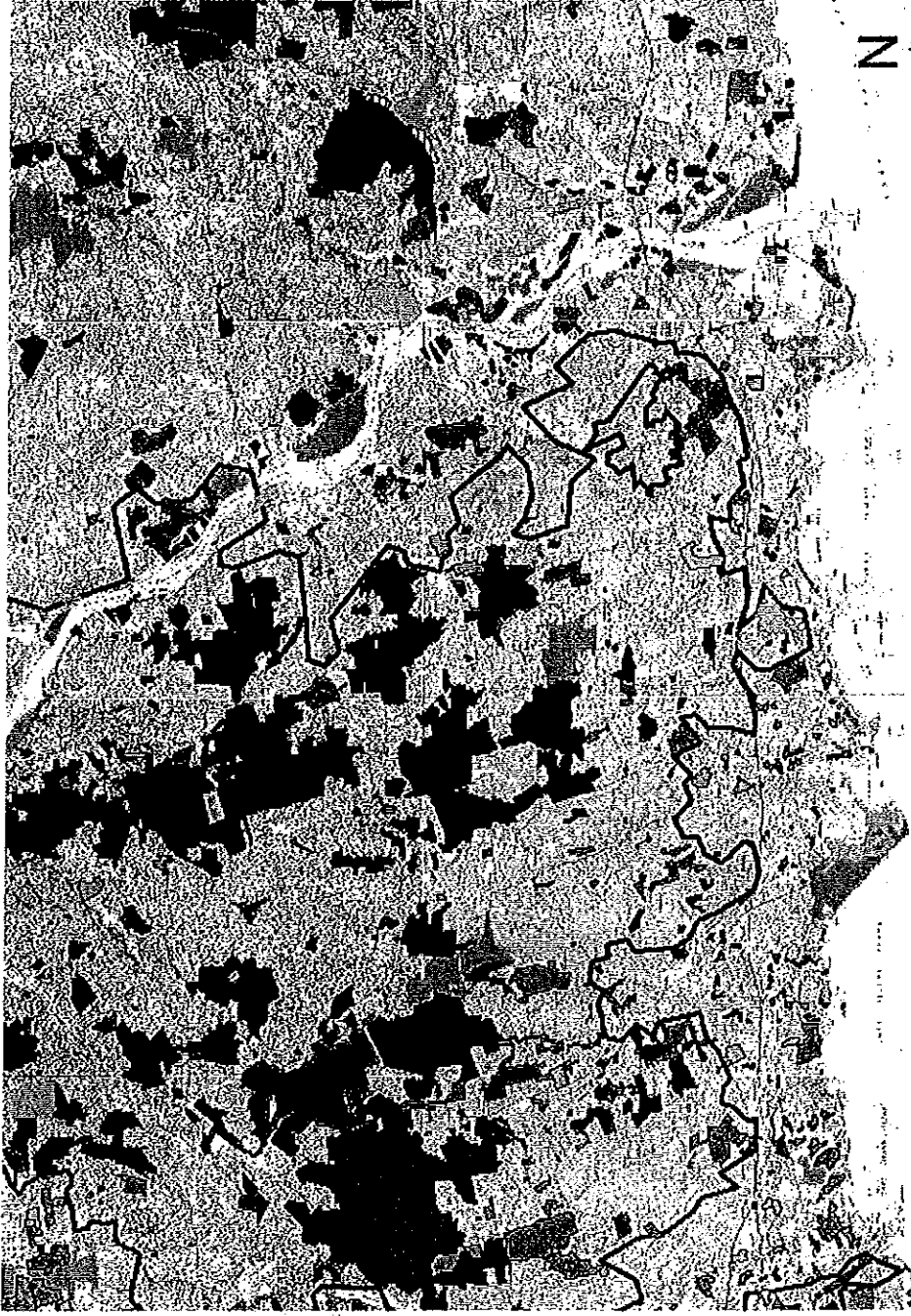
Audubon CONNECTICUT



	Preserve
	Municipal Property
	Conservation
	Building Preserved Open Space
	General Acquisition
	Preservation
	Recreation
	School
	Unincorporated
	Water Company Lands
	Municipal Property
	Conservation
	Building Preserved Open Space
	General Acquisition
	Preservation
	Recreation
	School
	Unincorporated
	Water Company Lands
	DEP Property
	State Forest
	State Park
	State Park Specific Reserve
	State Park Trail
	Wildlife Area, Preserve
	Wildlife Area
	Wildlife Sanctuary
	Riparian Preserve
	Flood Control
	Rain Harvesting
	DEP Owned Wetlands
	Water Access
	Other
	Solon Range Corridor

16 Miles

Property and Protected Open Space Within Region

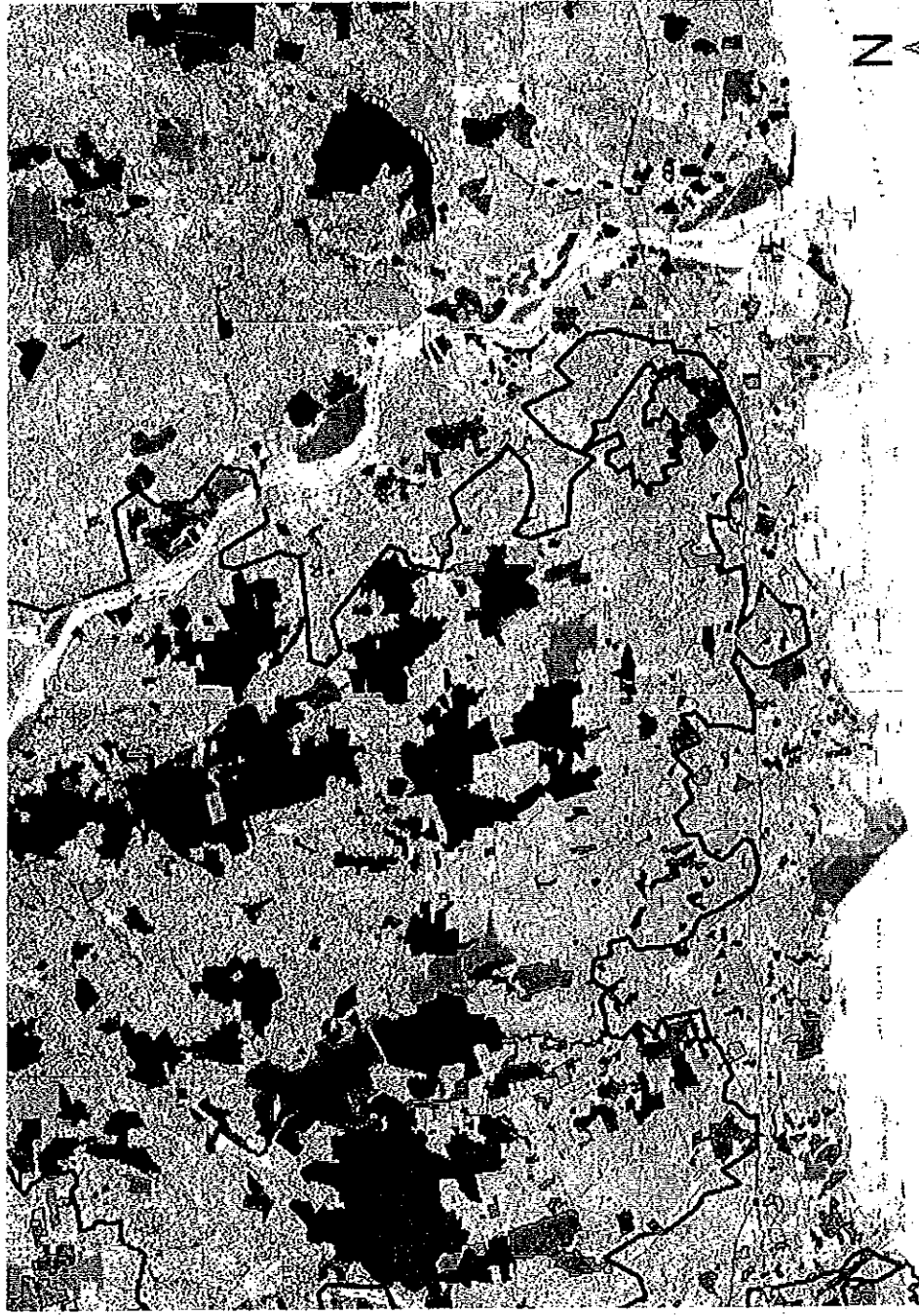


Audubon CONNECTICUT



	Preserve
	State Property
	Conservation
	Existing Preserved Open Space
	General Recreation
	Preservation
	Recreation
	School
	Unincorporated
	Unincorporated
	State Property
	Conservation
	Existing Preserved Open Space
	General Recreation
	Preservation
	Recreation
	School
	Unincorporated
	Unincorporated
	State Property
	State Forest
	State Park
	State Park Specific Reserve
	State Park Trail
	Natural Area Preserve
	Wildlife Area
	Wildlife Sanctuary
	Historic Preserve
	Flood Control
	Fish Hatchery
	DEP Owned Waterbody
	Water Access
	Other
	Bottom Land Control

Property and Protected Open Space Within Region

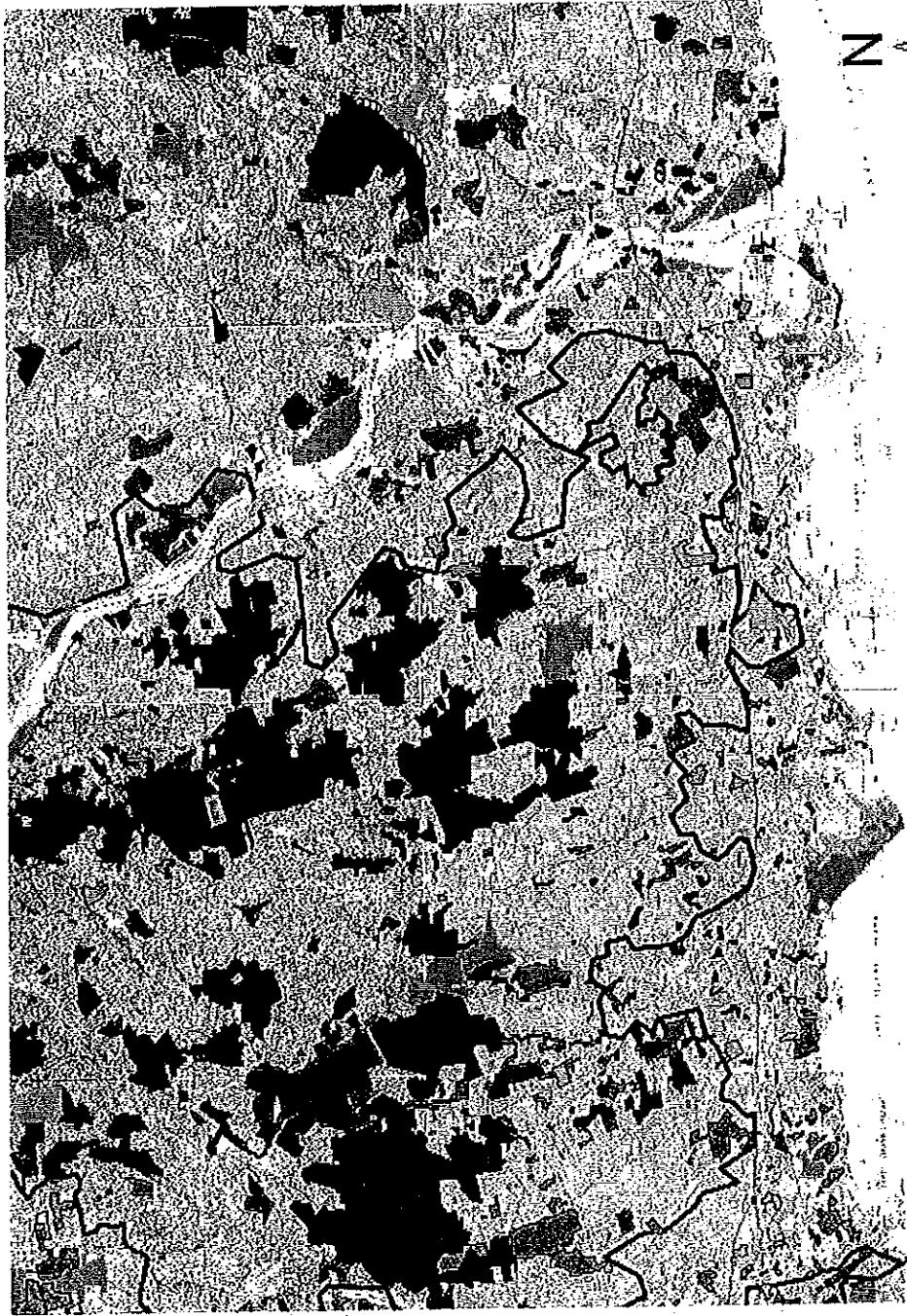
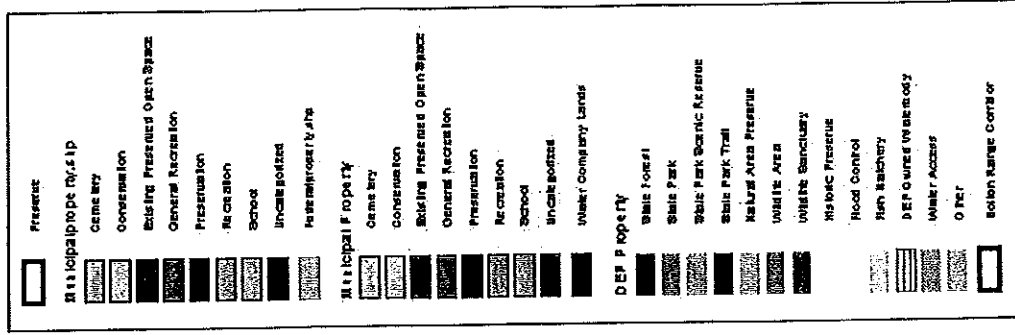


Audubon CONNECTICUT



	Preserve
	Municipal Property
	County
	Conservation
	State Preserved Open Space
	General Recreation
	Preservation
	Recreation
	School
	Unincorporated
	Tramway/Right of Way
	Municipal Property
	County
	Conservation
	State Preserved Open Space
	General Recreation
	Preservation
	Recreation
	School
	Unincorporated
	Unsettled Company Lands
	DEP Property
	State Forest
	State Park
	State Park Scientific Reserve
	State Park Trail
	Natural Area Preserve
	Wildlife Area
	Wildlife Sanctuary
	Historic Preserve
	Road Control
	Fire Station
	DEP Owned Waterbody
	Water Access
	Other
	Rolling Range Corridor

Property and Protected Open Space Within Region



Audubon CONNECTICUT

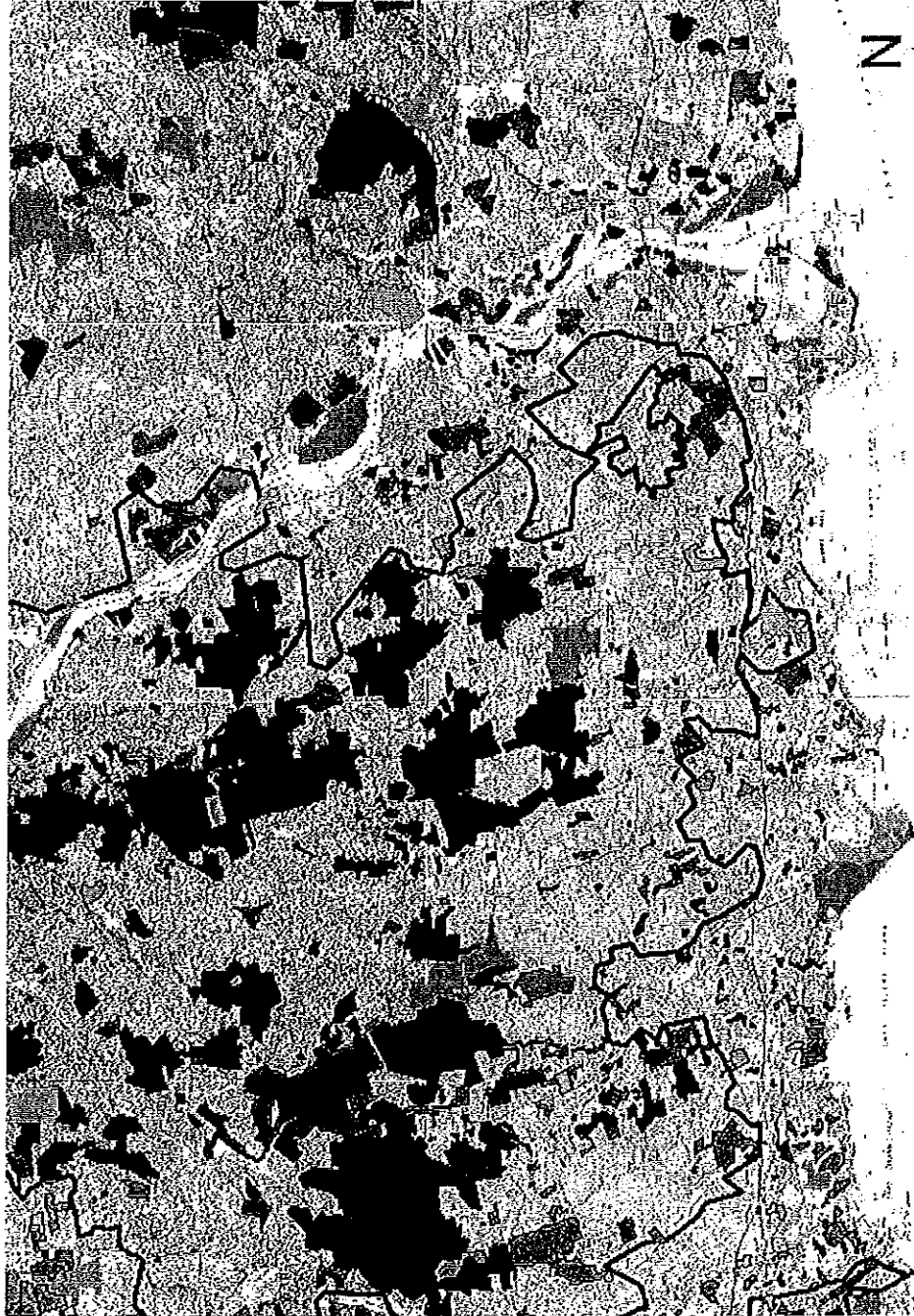
16 Miles

8

0

8

Property and Protected Open Space Within Region

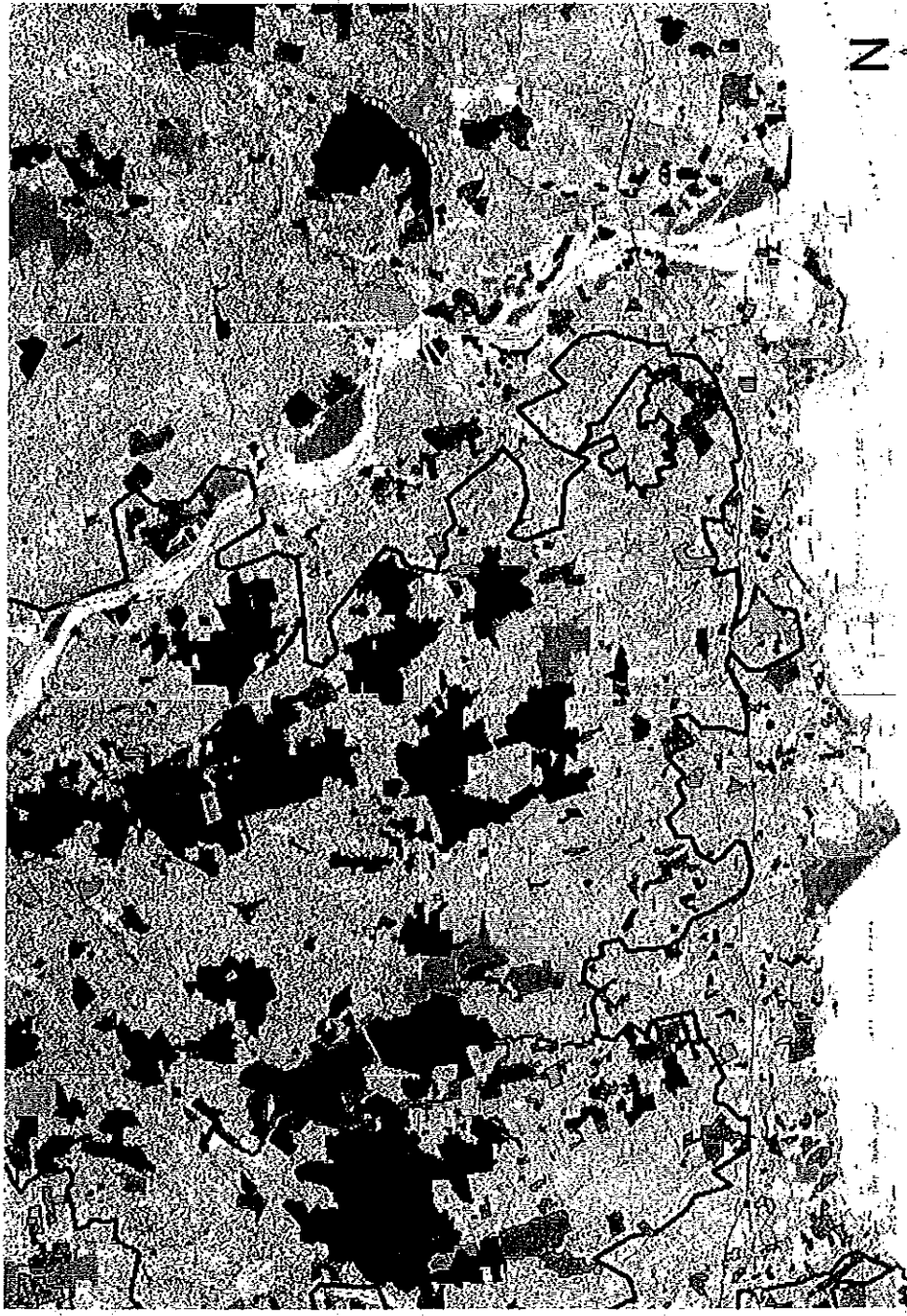


Audubon CONNECTICUT



	Preserve
	Unincorporated Property
	Cemetery
	Conservation
	Building Preserved Open Space
	General Recreation
	Recreation
	School
	Unincorporated
	Unincorporated
	Unincorporated Property
	Cemetery
	Conservation
	Building Preserved Open Space
	General Recreation
	Recreation
	School
	Unincorporated
	Unincorporated
	Water Company Lands
	Open Property
	State Forest
	State Park
	State Park Historic Reserve
	State Park Trail
	Natural Area Preserve
	Wildlife Area
	Wildlife Sanctuary
	Historic Preserve
	Flood Control
	Fish Hatchery
	State-owned Waterbody
	Water Access
	Other
	Region Range Contour

Property and Protected Open Space Within Region



	Preserve
	Municipal Property
	Cemetary
	Conservation
	Existing Protected Open Space
	General Recreation
	Preservation
	Recreation
	School
	Unincorporated
	Preservation Site
	Municipal Property
	Cemetary
	Conservation
	Existing Protected Open Space
	General Recreation
	Preservation
	Recreation
	School
	Unincorporated
	Unincorporated Lands
	DEP Property
	State Forest
	State Park
	State Park Scenic Reserve
	State Park Trail
	Regional Area Preserve
	Wildlife Area
	Wildlife Sanctuary
	National Preserve
	Road Control
	Railway
	DEP Owned Land
	Water Access
	Other
	Region Range Corridor

Audubon CONNECTICUT

16 Miles

8

0

8